

MOANALUA ELEMENTARY
Orchestra Program with Mr. Hamano Fall 2019

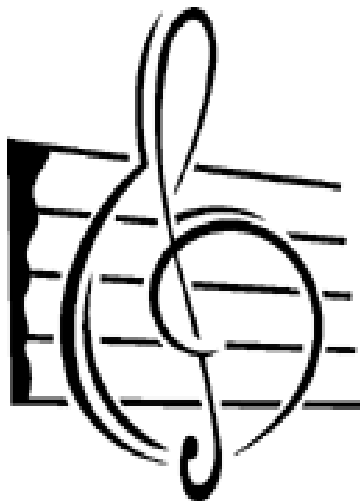
After School Enrichment
In the Music Room F1
Violin/Viola/Cello/Bass

Beginning Orchestra I: Fall Session*

Days: Tuesday/Thursday → Grades 4-6
Time: 2:20pm-3:15pm
(August 20th – December 19th)
*No previous experience or audition
required

Preparatory Orchestra: Fall Session**

Days: Tuesday/Thursday → Grades 4-6
Time: 3:20-4:15pm
(August 20th – December 19th)
**Previous Experience or Completion of Beginning Orchestra I
Required



DEADLINE: August 20th. Forms and Tuition may be submitted at the Open House on August 1st. Forms may also be scanned and emailed to jhamano@moanalupto.org. If you do email the forms, please submit the tuition at the first class on August 20th. Unfortunately, the school office will no longer accept registrations for the orchestra class.

Forms are available at: <http://www.moanalupto.org/orchestra/>

COST: \$200 tuition for the Fall session. This includes instruction, performances, materials, and an instrument to use for the length of the course. Please make checks payable to Jeff Hamano.

CONTACT: Mr. Hamano → jhamano@moanalupto.org
